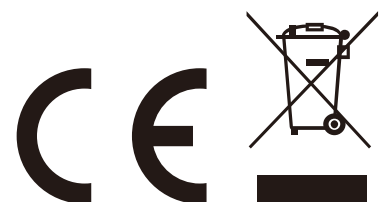
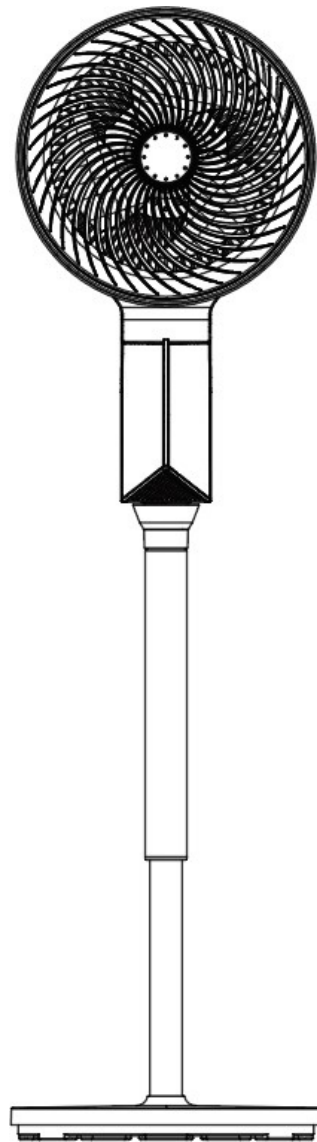




IN251100639V01\_UK

**824-135V70**



**IMPORTANT, RETAIN FOR FUTURE REFERENCE: READ CAREFULLY.**

Thank you for purchasing our products. In order to make better use of the product, please read the instructions carefully. And please keep this manual for future reference.

## **SAFETY NOTICES:**

Please read this manual carefully and thorough, make sure all the accessories are available according to this manual. And check if the product is intact and not damaged, and the product is complaint with description.

Also, please make sure the product is in water-level position and don't turn it upside down. Please contact us or our distributor if you have any suggestions or any problems.

1. This appliance can be used by children aged from 8 years and above and persons with reduced physical, sensory or mental capabilities or lack of experience and knowledge if they have been given supervision or instruction concerning use of the appliance in a safe way and understand the hazards involved.
2. Children shall not play with the appliance.
3. Cleaning and user maintenance shall not be made by children without supervision.
4. **WARNING!** Never use without the guards in place. After assembly, do not remove the guards during use or cleaning.
5. If the supply cord is damaged, it must be replaced by the manufacturer, its service agent or similarly qualified persons in order to avoid a hazard.
6. Please don't use this product in specific circumstances:
  - a. Place which is wet;
  - b. Places subject to direct sunlight or rain;
  - c. Corrosive or explosive environment;
  - d. Extreme temperatures.
  - e. Places don't put the product near curtains, with obstacles or unstable objects.
7. Don't plug in before properly installed.
8. Confirm the power is compliant with the label.
9. Inserting a pointed object into the metal mesh of the fan head is strictly forbidden.
10. This product is not subject to control by person who is physical or mental disabled unless they are under supervision and well instructed.
11. Keep this product from impact or over-force handled.
12. Do not place this product under a power socket.
13. Do not unplug the plug with a wet hand.
14. Please check if damage occurs on the power cord or plug.
15. Changing the power cord must be performed by professionals.
16. Please unplug the product when moving this product or power supply breaks.
17. Infants or elders should avoid long-time under the maximum level of wind.
18. Children should be supervised to ensure that they do not play with the appliance.
19. Disconnect the plug from the power socket when the product is not in use.
20. Do not touch the product with wet hands.
21. This product is for home use only, not for any commercial purposes.

- 22. Do not expose the product to outdoor (rain or in direct sunlight).
- 23. Do not disassembly this product personally.
- 24. It's strictly forbidden to connect this product to the power source before it is properly installed.

**Important Notice:** The control panel shall not get wet in any circumstances. Power must be cut off when clean this product.



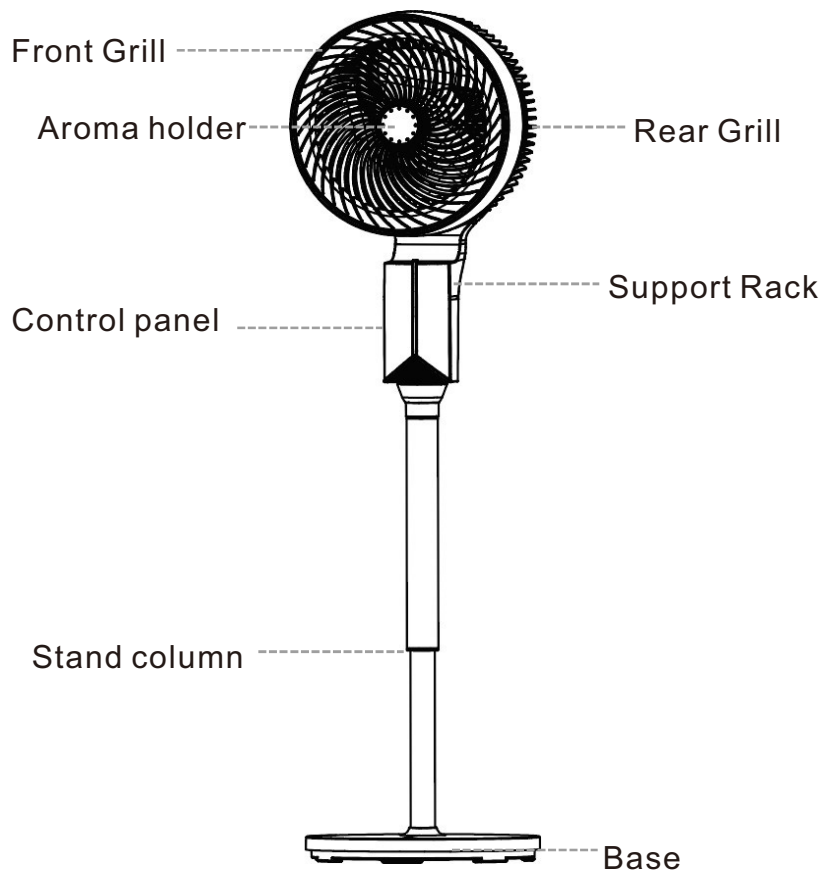
Small household appliances do not belong in the dustbin, take the product to the waste processing department concerned of your municipality.

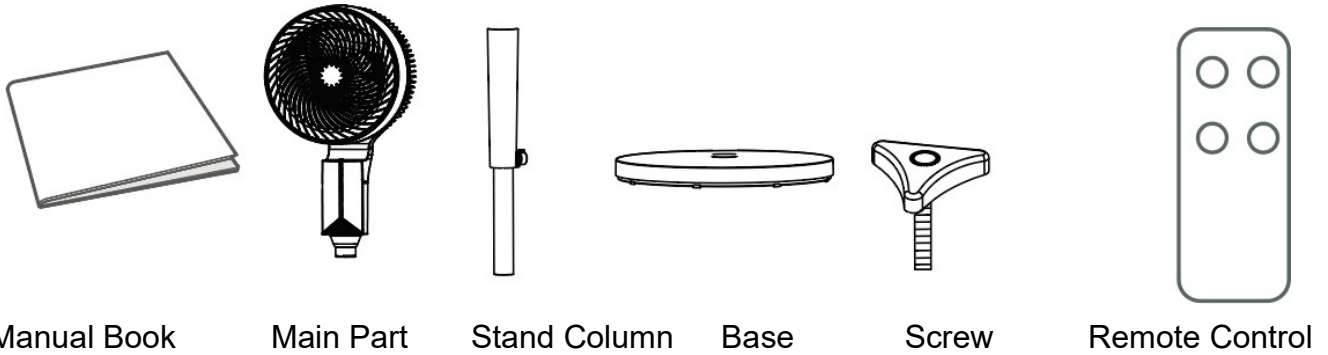
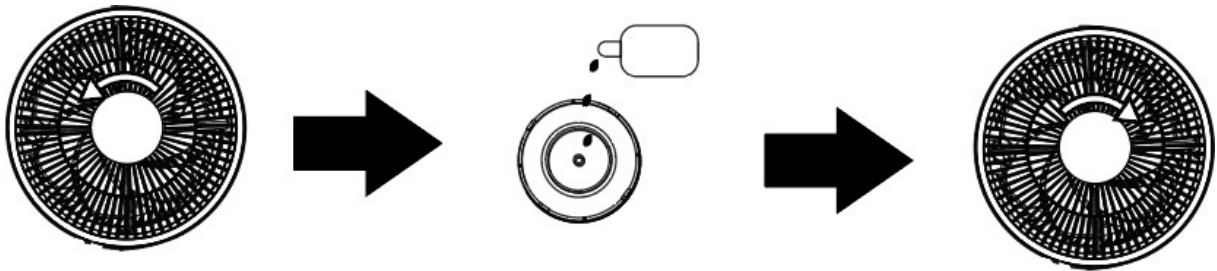


**MAIN TECHNICAL PARAMETERS**

P/N	Rated Voltage	Rated Frequency	Rated Power	Control	3D oscillation
FX-L53R	220-240V~	50-60Hz	60W	Remote	YES

**STRUCTURAL DIAGRAM**



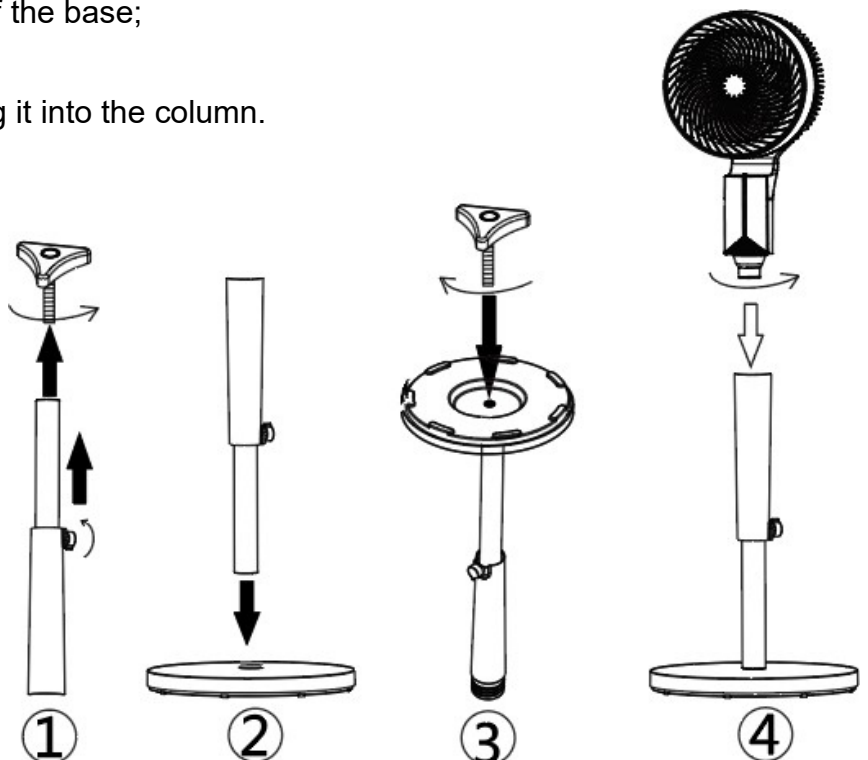
**PART LIST****AMORA INSTALLATION INSTRUCTIONS**

- 1, Switch the cap of the amora holder in the center counterclockwise to remove it. (Fig. 1)
- 2, Dipping the aroma essence into the aroma tablet. (Fig. 2)
- 3, Install back to the center of the fan head clockwise. (Fig. 3)

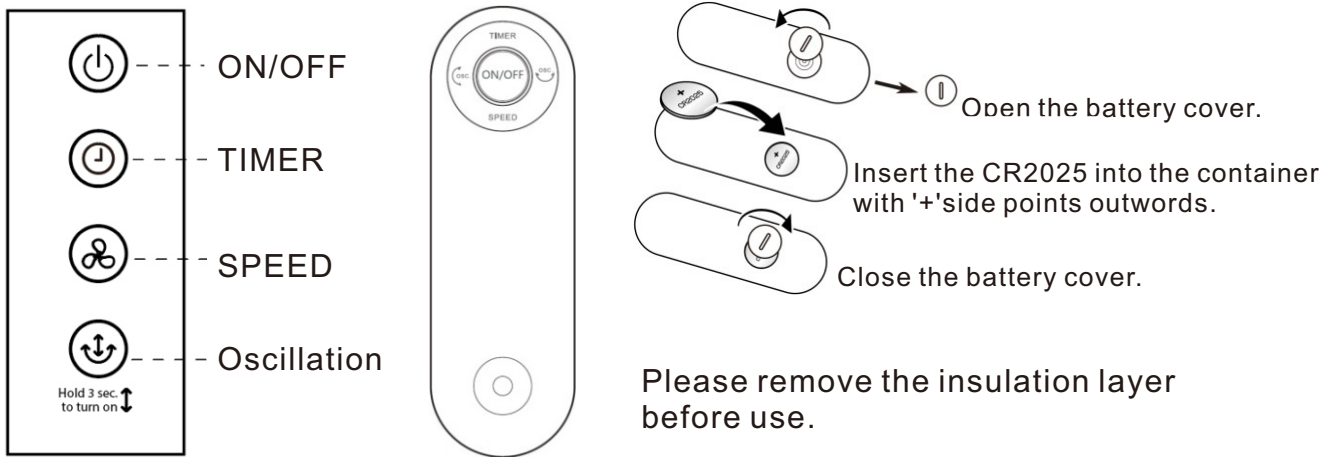
**ASSEMBLY INSTRUCTIONS**

Take out all parts from the carton box:

1. Take off the screw from the bottom of the column;
2. Put the column into the hole of the base;
3. Fasten the screw;
4. Install the main part by rotating it into the column.



## **ASSEMBLY INSTRUCTIONS**



**ON/OFF:** The fan beeps and turns on when touch this button, all buttons flash once and set into stand-by mode.

**Oscillation:** A quick touch to turn on or turn off the left-right swing, hold on for 3 sec. to turn on or turn off the up-down swing.

**Speed:** the default speed is 'F1' when turn on the fan, and speed increase 1 level by one touch until 8, and back to speed 1 by one more touch.

**Timer:** The timer increased 1 hour by one touch until 12 hours, displays from '0H', '1H'... to '12' in a cycle.

**Display Screen:** the screen displays the fan speed and timer. It displays '--' when turn the fan on. The screen turns off without operation for 3 minutes, and awakens by touch on any button.

## **MAINTENANCE AND STORAGE**

Please press the ON/OFF key to turn off the product, unplug from the socket before cleaning or maintenance.

**Important Notice:** Do not disassembly the product to clean inside of this product.

### **Cleaning the exterior:**

Please use a clean and soft cloth or with neutral solvent to clean the exterior.

- Do not use corrosive or alkaline solvent to clean this product.
- Do not clean the inside of this product (Circuit board, motor, etc.) with any solvent, and ensure no water reaches the control circuit in case of short circuit.
- Dry the exterior of this product.
- Do not submerge the product, power cord or plug in water in any circumstances.
- It's recommended to clean the product every 2 months.

**Seasonal Maintenance:** Clean the product at the end of the season before storing it.

- Clean the exterior in accordance with above instructions.
- Put the handle on the back of the product properly.
- Cover the product and store it upright on a dry and cool location.

**Notice:** When you found this product won't work or with abnormal smells, please cut-off the power immediately and inform our after-sales service department.

**⚠ WARNING**

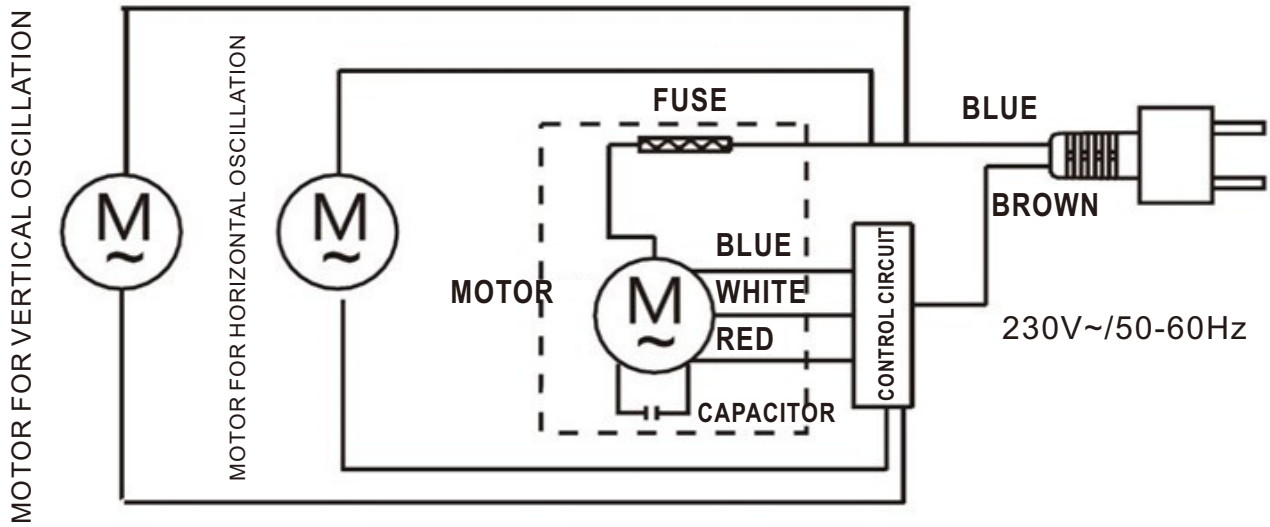
- **INGESTION HAZARD:** This product contains a button cell or coin battery.
- **DEATH** or serious injury can occur if ingested.
- A swallowed button cell or coin battery can cause **Internal Chemical Burns** in as little as **2** hours.
- **KEEP** new and used batteries **OUT OF REACH OF CHILDREN**
- **Seek immediate medical attention** if a battery is suspected to be swallowed or inserted inside any part of the body.

**Battery**

- 1) Battery type: CR2025
- 2) Nominal Voltage: 3V

**Instructions and manuals**

- a) Remove and immediately recycle or dispose of used batteries according to local regulations and keep away from children. Do NOT dispose of batteries in household trash or incinerate.
- b) Even used batteries may cause severe injury or death.
- c) Call a local poison control center for treatment information.
- d) Non-rechargeable batteries are not to be recharged.
- e) Do not force discharge, recharge, disassemble, heat above (manufacturer's specified temperature rating) or incinerate. Doing so may result in injury due to venting, leakage or explosion resulting in chemical burns.
- f) Ensure the batteries are installed correctly according to polarity (+ and -).
- g) Do not mix old and new batteries, different brands or types of batteries, such as alkaline, carbon-zinc, or rechargeable batteries.
- h) Remove and immediately recycle or dispose of batteries from equipment not used for an extended period of time according to local regulations.
- l) Always completely secure the battery compartment. If the battery compartment does not close securely, stop using the product, remove the batteries, and keep them away from children.

**ELECTRICAL DIAGRAM****UK**

If you have any questions, please contact our customer care center.

Our contact details are below:



0044-800-240-4004



enquiries@mhstar.co.uk

IMPORTER ADDRESS:  
 MH STAR UK LTD  
 Unit 27, Perivale Park,  
 Horsenden lane South  
 Perivale, UB6 7RH  
 MADE IN CHINA

